

Church of **St. Thomas**  
**More**



Oceanside, California

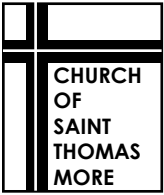


You also,  
as living  
stones...  
—1 Peter

November 2008



What you are  
is God's gift to you.  
What you make of yourself  
is your gift to God.



November 2008

Dear Friends,

As we once again dedicate ourselves to Christian Stewardship, we allow the words of Peter to echo in our minds, hearts, and souls:

***“You also, as living stones, are built up as a spiritual house, to be a holy priesthood, to offer up spiritual sacrifices, acceptable to God through Jesus Christ.”***

1 Peter 2:5

We are the living stones, each of us, coming together to be built up as a spiritual house, as the Church, which continues the mission and ministry of Jesus for this time and this place.

In December 2007, I received a Christmas card from Larry and Betty Dorsa. In their card was a note which said: “Father, we already have a Church, the buildings will come in time.” That thought is significant!

We always need to keep focused that the Church, ultimately, is a gathering of people in faith not a building.

We are the living stones of which the Church is built. We already have a consecrated Temple that is built with the members of this Parish, the living stones.

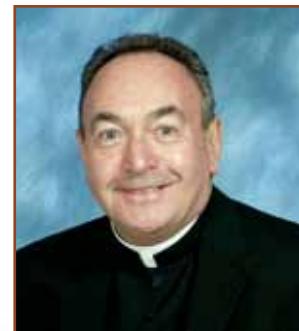
This Stewardship booklet provides you with many opportunities by which you can allow yourself to be that living stone which is a part of the foundation of this Church. You will benefit, your family and friends will benefit, and the world will benefit!

Let us together, living stone upon living stone, be the living Temple, the living Church that continues the mission of Jesus for this time and this place.

Sincerely in Christ,

A handwritten signature in black ink that reads "Fr. Mike".

Rev. Michael Ratajczak  
Pastor



# Table of Contents

**STEWARDSHIP: Time & Talent ..... 5**

**Pastoral Council ..... 6**  
 Committee Chairpersons ..... 6

**Faith Formation & Evangelization ..... 6**  
 Evangelization ..... 6  
 Vocations..... 6  
 Adult Faith Formation..... 6  
 Religious Education for Adults ..... 6  
     Little Rock Scripture Studies ..... 6  
     Small Church Communities ..... 6  
 Religious Education for Children..... 7  
 Liturgy of the Word for Children ..... 7  
 Youth Ministry ..... 7  
     High School..... 7  
     Middle School ..... 7  
 Rite of Christian Initiation..... 7  
     Adults ..... 7  
     Children..... 7  
 Sacramental Preparation..... 7  
     Baptism..... 7  
     Reconciliation/Eucharist..... 7  
     Confirmation..... 7

**Liturgy ..... 8**  
 Altar Linen Care..... 8  
 Bereavement Ministry ..... 8  
 Ecumenical & Interreligious Affairs..... 8  
 Environment & Art ..... 8  
 Eucharistic Adoration ..... 8  
 Interior Design Team ..... 8  
 Wedding Coordinator ..... 8  
 Liturgical Ministers..... 8  
     Altar Servers ..... 9  
     Eucharistic Ministers..... 9  
     Hospitality..... 9  
     Readers ..... 9  
     Sacristans ..... 9  
 Liturgical Music ..... 9  
     Adult Choir ..... 9  
     Children's Choir ..... 9  
     Handbell Choir ..... 9  
     Monday Night Mass Music Team..... 9  
     Paschal Choir ..... 9

**Marriage & Family Life..... 10**  
 Marriage & family Enrichment ..... 10  
 Marriage Preparation ..... 10  
 Engaged Encounter Weekend ..... 10  
 Evenings for the Engaged ..... 10  
 Family Services ..... 10  
 Parents & Tots..... 10  
 Widows & Widowers ..... 10

**Parish Organizations & Events..... 11**  
 Golf Classic ..... 11  
 Historians ..... 11  
 Knights of Columbus..... 11  
 Parish Library ..... 11

Senior Ministry ..... 11  
 Social Activities ..... 11  
 Women's Guild ..... 11

**Social Ministries..... 12**  
 Bereavement Follow up Support ..... 12  
 Blood Drive ..... 12  
 Brother Benno's ..... 12  
 Christmas Angel Ministry ..... 12  
 Faith Works..... 12  
 CPR/AED Classes ..... 12  
 Disability Facilitation ..... 12  
 Fraternity and Michaelle House ..... 12  
 Huggy Buddies Program ..... 12  
 Interfaith Committee for Worker Justice ..... 12  
 Interfaith Shelter Network ..... 12  
 Jail Ministry..... 12  
 More's Workers..... 13  
 Prayer Request Line..... 13  
 Project Linus ..... 13  
 Pro-Life Activities ..... 13  
 Sick and Homebound ..... 13  
 Sister Parish ~ St. Peter Claver ..... 13  
 Parish Social Justice (PSJ)..... 13  
 Sister Parish..... 13  
 St. Bonaventure Mission..... 13

**Development Council ..... 14**  
 Committee Chairpersons..... 14  
 Annual Catholic Appeal..... 14  
 Capital Campaign ..... 14  
     New Construction..... 14  
     Parish Membership ..... 14  
     Planned Giving ..... 14  
     Publicity/Public Relations ..... 14  
     Sacrificial Giving/Tithing..... 14  
     Scrip Sales ..... 14  
     Stewardship Coordinator ..... 14  
     Vehicle Donations ..... 14  
     Welcome Ministry ..... 14

**Finance Council ..... 15**  
 Committee Chairpersons..... 15

**Office Support ..... 15**  
 Chair Ministry ..... 15  
 General Support..... 15  
 Kitchen Overseer ..... 15  
 STM Host Program..... 15

**STEWARDSHIP: Treasure ..... 16**  
 Sacrificial Giving Guide..... 17-18

**Memorials..... 19**

**Capital Campaign..... 20**  
 Capital Campaign Status ..... 21-23  
 Gift Plan Suggestions ..... 24  
 Planned Giving Options..... 25  
 Towers of Faith..... 26

**Pastoral Staff ..... 27**



# STEWARDSHIP: Time & Talent

Parish Mission Statement

*“To worship God,  
teach and live the Gospel of Jesus Christ,  
and serve God’s people in word and deed.”*





## PASTORAL COUNCIL

### Chair

*Doug D'Agrosa 941-6800 dougdag@cox.net*

The Pastoral Council assists the Pastor in the administration of the Pastoral aspects of Parish life. There are five major committees responsible for advancing the Mission of the Parish.

### Secretary

*Cathy Zych 598-9244 cazych@sbcglobal.net*

### COMMITTEE CHAIRPERSONS

#### Faith Formation & Evangelization

*Rory Griffin 414-3939 rgrifdog@cox.net*

#### Liturgy

*(Please contact Douglas Lynn at 758-4100 x140)*

#### Marriage & Family Life

*Paul & Kalei Mendiola 945-9042 Kaleiann@sbcglobal.net*

#### Parish Organizations & Events

*Position Available*

#### Social Ministries

*Suzee Irwin 597-2706 rj.suzee@sbcglobal.net*



# Faith Formation & Evangelization

### Chair

*Rory Griffin 414-3939 rgrifdog@cox.net*

Faith Formation describes the process of discovering, unwrapping, examining and appreciating God's gift of faith. This committee facilitates the many opportunities our Parish offers for accomplishing this.

### Evangelization *(Position Available)*

This committee seeks to be a catalyst in the Parish to help all ministries see that what they are doing involves Evangelization.

### Vocations

*Deacon Tom and Patt Goeltz 727-8442  
thomasg@stmoside.org pattgoeltz@sbcglobal.net*

### Religious Education for Adults

*Wayne Zych 598-9244 wayne.zych.bxb8@statefarm.com*

This ministry is committed to providing an ongoing program which nurtures and enriches the lifelong faith journey of our adult Parishioners.

### Little Rock Scripture Studies

*Masako Streling 295-2594 mstr0619@cox.net*

These sessions open the riches of Scripture to participants. Through study, discussion and prayer, members deepen their relationship with God.

### Small Church Communities

*Sondra Parks 598-1269 sondraparks@hotmail.com*

Small Church Communities provide regular gatherings for parishioners in small groups to connect their everyday life and faith. Sharing and prayer center around the Scriptures for Sunday.





**Religious Education for Adolescents and Children (RE.A.CH)**

*Kathleen Bell 758-4100 x110 kathleenb@stmoside.org*

This ministry offers age appropriate religious education for each level of faith development. Our program is based on the Catechism of the Catholic Church, which combines the riches of the past with a compass for the future.

**Liturgy of the Word for Children**

*Cathy Meyer 598-7853 cmeyer87@cox.net*

Children ages 4-12 have the opportunity to celebrate God's Word from the Children's Lectionary at Sunday Masses.

**YOUTH MINISTRY**

**Middle School (PUSH)**

*Ron and Louise Briseno 758-4100 x153  
ronb@stmoside.org and louiseb@stmoside.org*

This group is founded on Faith, Friends and Fun for 6th, 7th and 8th graders. They join as Friends to have Fun and to share their Faith through everyday life experiences on the 2nd and 4th Mondays of the month, from 7:00-8:30 p.m.

**High School**

*Jeff and Gale Gibbons 726-7236  
galeg@stmoside.org and jeffg@stmoside.org*

Teens, grades 9-12, are given an opportunity for support in their spiritual, moral and social development through a Catholic faith-based process.

**Young Adults**

*Joanna Mueller 726-5644 yrmomgoes2college@sbcglobal.net*

Group offers young adults ages 18-29 an opportunity to continue their faith education through Bible Study, praise and worship and encourages active Church participation.

**RCIA/Adults**

*Mario Diaz 758-7870 mario.diaz@sun.com*

This process is designed for adults interested in full membership in the Catholic Church. Through God's help, within the community of St. Thomas More, they will be strengthened spiritually and receive the sacraments and full initiation into the Catholic Church at the appropriate time.



**RCIA/Children**

*Jeanette Marriott 434-1818 marriott@sbcglobal.net*

This ministry offers unbaptized children (age 7 & up) and their parents a program for preparation to receive the Sacraments of Baptism, Eucharist and Confirmation.

**Sacramental Preparation**

*Kathleen Bell 758-4100 x110 kathleenb@stmoside.org*

**Baptism**

These classes prepare parents and sponsors for the Baptism of infants and children under the age of seven. To begin the process, call Kathleen Bell.

**Reconciliation/Eucharist**

This offers leadership and support for parents, in this home-center program of preparation.

**Confirmation**

This program completes the Sacraments of Initiation and calls young people to deepen their journey of faith.



# Liturgy

*“The liturgy is the summit toward which the activity of the Church is directed; it is also the fount from which all her power flows.”*

—The Constitution on the Sacred Liturgy

## THE LITURGY COMMITTEE

The purpose of this committee is to enhance and encourage the worship of the faith community at the Church of St. Thomas More and stimulate and strengthen personal and communal spiritual growth.

### Chair

(Please contact Douglas Lynn at 758-4100 x140)

### Altar Linen Care

*Marge Gillen 639-1929*

Ministers maintain the small church linens used by the priest and ministers during Mass.

### Bereavement Ministry

*Sr. Maureen Brown 758-4100 x131 maureenb@stmoside.org*

Members provide immediate and future funeral planning, assist with funeral liturgies, host receptions and walk with the bereaved through their season of grief.

### Ecumenical & Interreligious Affairs

*Regina Aulisio 295-5530 raulisio@yahoo.com*

Members provide educational and interactive opportunities with other Christian and non-Christian faith communities.



### Environment & Art

*Kathy Quinn 722-7525 kathleenq2@cox.net*

Members create liturgically suitable surroundings for the Parish's worship.

### Eucharistic Adoration

*John O'Donnell 598-6003 irishsod@roadrunner.com*

Exposition of the Blessed Sacrament is held twice each month. The chapel is open for devotional prayer Monday-Friday.

### Interior Design Team

*Phil & Pat Goscienski 732-1414 drphilg@cox.net*

With help from our Liturgical Consultant, members will design a worship space for our new church that will suit the needs of the liturgy and the personality of the local community.

### Wedding Ministry

Ministers assist with wedding rehearsals and liturgies in support of this joyous sacrament.

### LITURGICAL MINISTERS

Liturgical ministers are Parishioners who give time and talent to assist in our Parish's communal and individual worship.

### Coordinator

*Douglas Lynn 758-4100 x140 douglasl@stmoside.org*



## Altar Servers

Servers carry the cross, candles, thurible and boat and incense the congregation. They assist the presider or deacon with the Roman Missal, bread, wine, and water.

## Eucharistic Ministers

Extraordinary Ministers of Holy Communion assist the priest in the distribution of the Precious Body and Blood of Christ. They serve at church liturgies, in homes, and at Tri-City Hospital.

## Hospitality Ministers

These ministers assist the congregation at each Mass, welcoming all to our church home and to the Lord's table.

## Readers

Readers proclaim the word of God to our faith community at Mass.

## Sacristans

Daily sacristans prepare for the Liturgies of the Word and Eucharist as well as minister as Altar Servers.

Weekend sacristans open the church, set up the Plaza, and prepare the building and worship space for Mass.



## LITURGICAL MUSIC

"God dwells within each human person, in the place where music takes its source."

—Singing to the Lord, United States Conference of Catholic Bishops

## Director

*Douglas Lynn 758-4100 x140 douglasl@stmoside.org*

## The Congregation

Congregational singing nourishes us and strengthens our interior commitment of faith.

## Instrumentalists

Instrumentalists participate during Mass and entertain at social events.

## Adult Choir

This choir supports the congregation's song and provides additional music for the assembly's benefit and as outreach to the community.

## Children's Choir

Open to children in grades 2-8, this choir sings at Mass and at festivals outside the Parish.

## Monday Night Mass Music Team

The Parish's youth make up this music team of instrumentalists and singers in support of Monday Night Mass and one weekend Mass each month.

## Handbell Choirs (Youth & Adult)

These exuberant and joyful choirs play at Mass and for the community.

## Paschal Choir

This group brings consolation to families during Parish funeral Masses and memorial services.





## Marriage & Family Life

### Chair

*Paul & Kalei Mendiola 945-9042 kaleiann@sbcglobal.net*

The purpose of this ministry is to achieve a more meaningful expression of Catholic belief by preserving and fostering the dignity and sacred value of the family.

### Marriage Preparation

*Rev. Michael Ratajczak 758-4100 x100*

*michaelr@stmoside.org*

*Deacon Tom Goeltz 758-4100 x130 thomasg@stmoside.org*

This includes the Diocesan Marriage Preparation Program, Engaged Encounter weekends and Evenings for the Engaged.

### Engaged Encounter Weekend

*Chuck & Sally Fay 727-1766 sallyinvista@adelphia.net*

### Evenings for the Engaged

*Rick & Lisa Reaves 945-3212 ricnlis@cox.net*

Engaged couples meet one evening a week for six weeks in preparation for the sacrament of marriage.

### Family Services

*Deacon Tom Goeltz 758-4100 x130 thomasg@stmoside.org*

Support is offered for troubled marriages through and annulment support.

### Marriage & Family Enrichment

*Paul & Kalei Mendiola 945-9042 kaleiann@sbcglobal.net*

Groups focus, in various forums, on bringing the faith alive in their families on a daily basis.

### Parents & Tots

*Paul Mendiola 945-9042 kaleiann@sbcglobal.net*

This play group/Bible study meets weekly at local parks.

### Widows & Widowers

*Helen Kuhn 727-8612*

*Jackie Cohen 726-4343*

Catholic Widows & Widowers of North County offers monthly social activities and support.





## Parish Organizations & Events

### Chair

*(Position Available)*

Our goal is to create within our Parish family an environment of belonging and interdependence and extend this atmosphere of welcome and support to the surrounding community.

### Golf Classic

John Murphy 945-9935 [murphy8801@cox.net](mailto:murphy8801@cox.net)  
 R.J. Irwin 597-2706 [rj.suzee@sbcglobal.net](mailto:rj.suzee@sbcglobal.net)

This group hosts an annual adult golf tournament, miniature golf tournament (all ages!) and gala evening dinner festivities held at the Parish, which includes raffles, silent and live auctions.

### Historian

Anne Marshall 727-2668 [annemarshall@sbcglobal.net](mailto:annemarshall@sbcglobal.net)

This person is responsible for compiling photographs of Parish events and organizing them in albums that are available in the Parish library.

### Knights of Columbus

John O'Donnell 598-6003 [irishod@roadrunner.com](mailto:irishod@roadrunner.com)

Knights are an order of Catholic men and their families, serving church and community. The Knights coordinate many Parish events, such as pancake breakfasts and Lenten fish dinners.



### Parish Library

Christine James 732-0569 [christinevista@aol.com](mailto:christinevista@aol.com)

The library offers a variety of spiritual books, audio-visual and reference materials, available during Sunday Masses and office hours. A self checkout system is available.

### Senior Ministry

Stella Leu  726-3869 [dleue2@sbcglobal.net](mailto:dleue2@sbcglobal.net)  
 Judy & Jerry Buoniconti 758-5113 [sunshinejfb@hotmail.com](mailto:sunshinejfb@hotmail.com)

The goals of the Spirited Seniors are to enhance spiritual, educational, social and friendship needs of its members.

### Social Activities

Henny Jocelyn 726-1177 [drikaost55@cox.net](mailto:drikaost55@cox.net)

This group hosts activities such as our Ash Wednesday Soup Suppers, Holy Thursday dinners, potlucks, special receptions, campouts and other events to share community.

### Women's Guild

Germaine Wilmott 758-9949

The Women's Guild is an organization for all women of the Parish. The Guild promotes social interaction, complements the spirituality of its members, and raises funds for the building fund. Fund raising activities include the Christmas Raffle, Quilt Raffle and Bake Sales.



# Social Ministries

## Chair

*Suzee Irwin 597-2706 rj.suzee@sbcglobal.net*

These ministries instill and carry out within the Parish Family of St. Thomas More a sense of responsibility for, and a dedication to, the Church's teaching regarding the inherent dignity of every human person, including the unborn, each of whom has been created in the image and likeness of God.

## Bereavement Follow up Support

*Linda Dicus 726-5081 lindadicus@webtv.net*

"Good Grief" is a support group offered at various times throughout the year at St. Thomas More and surrounding Parishes for those coping with the loss of loved ones.

## Blood Drive

*Linda Dicus 726-5081 lindadicus@webtv.net*

This group coordinates bi-annual Parish Blood Drives held at our Parish, in conjunction with the American Red Cross.

## Brother Benno's

*Deacon Tom & Patt Goeltz 727-8442 thomasg@stmoside.org*

Parishioners collect food, clothing and toys for the homeless throughout the year, and help folding clothes.

*George Jones 940-9288 geopjones@cox.net*

Coordinates food line servers for Brother Benno's on a monthly basis.

## Christmas Angel Ministry

*R.J. Irwin 597-2706 rj.suzee@sbcglobal.net*

Volunteers help collect, sort and distribute Christmas presents to needy infants and children in our community.

## Faith Works

*Sr. Maureen Brown 758-4100 x131 maureenb@stmoside.org*

This group assists in the building of community organizations with the power to improve the quality of life of families and neighborhoods.



## CPR/AED Classes

*Philip J. Goscienski, M.D 732-1414 drphilg@cox.net*

The ability to provide cardiopulmonary resuscitation (CPR) is a skill that can change the course of a life and future of a family. Our team of instructors has trained over 300 Parishioners in adult and/or child CPR, and in the use of our AED (Automated External Defibrillator). Classes are available every month.

## Disability Facilitation

*Ann Eriksson 599-7151 eriksson1@mindspring.com*

This group coordinates and addresses the needs of Parishioners with disabilities as they pertain to the Parish facility and community.

## Fraternity and Michaelle Houses

*Carmen Tamayo 727-3028*

Once a month, Parish volunteers plan, purchase and prepare a home cooked meal for persons with AIDS.

## Huggy Buddies Program

*Gale Gibbons 726-7236 galeg@stmoside.org*

Volunteers work to collect and distribute stuffed animals to the elderly at nearby care facilities at Christmas time.

## Interfaith Committee for Worker Justice

*Sr. Maureen Brown 758-4100 x131 maureenb@stmoside.org*

Volunteers organize religious communities of all faiths to help the voice of the working poor be heard by striving for improved wages, benefits and working conditions.

## Interfaith Shelter Network

*Frank Coxon 599-8760 fcoxon4965@roadrunner.com*

Volunteers annually help coordinate food and shelter for 12 persons over a 2-week period.

## Jail Ministry

*Rita McCarthy 758-4100 x100*

These are volunteers who visit and minister to the imprisoned.



### More's Workers

Dick Belprez 295-1431 rbelp@cox.net

Our Parishioners help those in need in our own neighborhood with house repairs under the auspices of Interfaith Community Services. An email goes out when repairs are needed and people respond as they are able to do so.

### Prayer Request Line

Pat Wong 806-1310  
Norma Flanagan 630-0180

This group of Parishioners prays for the needs of others.

### Project Linus

Mary Coxon 599-8760 fcoxon4965@roadrunner.com

Homemade blankets are made by volunteers for children undergoing physical and emotional difficulties and for infants.

### Pro-Life Activities

Jane Kelleher 724-9658 shepkell@dslexreme.com

This group works with the Diocese to implement various Pro-Life activities and various food and clothing drives for Birth Choice.

### Sick and Homebound

Jean McCloskey 643-2363

Eucharistic ministers bring the Eucharist and share time with nursing home patients, homebound people and others who are unable to attend Mass. Volunteers provide their friendship as well as spiritual comfort during their visits

### Sister Parish ~ St. Peter Claver

Sr. Maureen Brown 758-4100 x131 maureenb@stmoside.org

Committee is responsible for formulating a plan for providing ongoing assistance to our Sister Parish in New Orleans. They experienced major devastation from Hurricane Katrina.

### Parish Social Justice (PSJ)

Sr. Maureen Brown 758-4100 x131 maureenb@stmoside.org

This committee keeps us informed about current social justice issues in our local community and the action that members of STM, along with other congregations, have taken.

### St. Bonaventure Mission

Knights of Columbus  
John O'Donnell 598-6003 irishod@roadrunner.com

This is an annual collection of clothing and blankets for the Navajo Indians of New Mexico.





## DEVELOPMENT COUNCIL

### Chair

*Ron Briseno 224-3105 ronbriseno@cox.net*

The Development Council assists the Pastor in creating a “culture of development” within the Parish, serving as a catalyst for growth and providing the means for us to meet long-term goals and objectives.

### Secretary

*Jody Cadieux 431-7446 jlc-consulting@sbcglobal.net*

### COMMITTEE CHAIRPERSONS

#### Annual Catholic Appeal

*Flora Fallone 758-4100 x152 florafallone@yahoo.com*

#### Capital Campaign

*Bill Ipsen 723-0402 bipsen@kpimed.com*

This committee works to ensure provision of the financial means to construct the necessary Parish buildings.

#### New Construction

*Brian Leahey 598-5697 bleahey@whiteresidential.com*

This committee assists and advises the Pastor on major building projects within the Parish.

#### Parish Membership

*Louise Briseno 726-4496 louiseb@stmoside.org*

Membership serves as the welcoming committee for new Parishioners. The committee members assist new members in networking with the various Parish ministries.

#### Planned Giving

*Chris Smith 758-4100 x120 chriss@stmoside.org*

Outreach is provided to Parishioners and the community to provide charitable opportunities through trusts, wills and estate planning.

#### Publicity/Public Relations

*Anne Marshall 727-2668 annemarshall@sbcglobal.net*

Members develop press releases, media campaigns and publish newsletters to promote the Parish and Parish activities.

### Sacrificial Giving/Tithing

*Paul Ibbetson 734-1051 paul@servicespecialistsinc.com*

The committee helps to distribute information and coordinate Parish financial resource support from our congregation.

### Scrip Sales

*Theresa Goeltz 586-1103 tmgoeltz@cox.net*

This program is a fund raiser to benefit the Building Fund. Scrip is gift certificates sold by various merchants who participate in the program. Scrip is sold to the Parish at a discount. It is then sold at face value and the merchants donate the difference to the Building Fund.

### Stewardship Coordinator

*Chris Smith 758-4100 x120 chriss@stmoside.org*

Coordinator works to ensure the best match of Parish and community needs with our volunteer capabilities.

### Vehicle Donations

*Michael Yambrach 805-9385 michaely@sepcor.net*

This person handles the details of vehicles that are donated to the Parish.

### Welcome Ministry

*Chris Smith 758-4100 x120 chriss@stmoside.org*

The responsibility of “Welcome Ministers” is to introduce prospective members to the life and activities of our Faith Community.





## FINANCE COUNCIL

### Chair

*Paul Ibbetson 744-1051 paul@servicespecialistsinc.com*

The Finance Council assists the Pastor in the administration of designated portions of the temporal aspects of Parish life including: Budgeting of Funds, Building & Grounds and Personnel.

### Secretary

*Nancy Busse 727-4549 nancybusse@roadrunner.com*

## COMMITTEE CHAIRPERSONS

### Budget

*Don Eppich 744-8705 dpe@politoepich.com*

### Building & Maintenance

*Paul Ibbetson 734-1051 paul@servicespecialistsinc.com*

### Legal

*Charles Salter 726-0878*

### Personnel

*Genevieve Green 822-6605 genevievegreen@cox.net*

Members of this Council serve by invitation of the Pastor. If you'd like to know more about this Council, please contact:

*Fr. Michael Ratajczak 758-4100 x100*

*michaelr@stmoside.org*

## Office Support

### Coordinator

*Henny Jocelyn 758-4100 x100 hennyj@stmoside.org*

Many opportunities are available to assist the Parish staff and Parish committees with a variety of office tasks.

### Chair Ministry

*Lorraine Doering 758-4100 x102 lorrained@stmoside.org*

Volunteers assist with chair set up and formation for weekend Masses.

### General Support

*Henny Jocelyn 758-4100 x100 hennyj@stmoside.org*

- Baptism Banner Makers
- Bulk Mail and Bulletin Stuffers
- Handymen
- Miscellaneous Office Work

### Kitchen Overseer

*DeAnne Gonzales 598-8748 ddreeci@cox.net*

This person is a liaison between our maintenance staff, the Parish Organizations and Events Committee and all who use the kitchen.

### STM Host Program

*Lorraine Doering 758-4100 x102 lorrained@stmoside.org*

Volunteers serve as the Parish liaison to outside groups using the facility.



# STEWARDSHIP: Treasure



# Sacrificial Giving Guide

*“But the seed sown on rich soil is the one who hears the word and understands it, who indeed bears fruit and yields a hundred or sixty or thirtyfold.”*

—Matthew 13:23

Offering financial resources to your Parish will help ensure that God’s work continues. Stewards of treasure joyfully return the first portion of all God has given them. Sharing their treasure is a way to thank God for the many blessings and gifts God has given.

## Tithing

Tithing is the biblical concept of sacrificial giving that encourages 10% of all that we earn be returned to the Lord as an act of Faith.

Parishioners are invited to tithe (10% of all gross household income) to the Lord - 8% to St. Thomas More and 2% to other charities of your choice. The tithe would cover the following:

- †Capital Campaign/Building Fund
- †Parish Operational Offering
- †Religious Education Fees
- †Sacrament Stipends:  
(Baptisms, Weddings, Funerals)
- †Annual Catholic Appeal (ACA)
- †All National Collections:
  - Annual Lenten Appeal
  - Collection of the Holy Father (Peter’s Pence)
  - Propagation of the Faith (Mission Appeal)
  - World Missions Collection
  - National Needs Collection
  - Retirement Fund for Religious Collection



The Capital Campaign would receive 62.5% of the tithe (5% of income) with the remaining 37.5% (3% of income) being distributed among the remaining items. If you choose to tithe, please complete only the upper portion of the enclosed response form.

## Sacrificial Giving

Sacrificial Giving is the process of consciously examining one’s household income and making a decision to give a percentage of it to the Church. If the “leap of faith” of tithing seems to be too great for you, we ask that you consider the “gradual approach.” Please examine and review not only the dollar amount that you presently give to the Church of St. Thomas More, but the percentage of your gross household income that dollar amount represents.

When you add up all your gifts to St. Thomas More, what percentage is that amount of your gross household income? Is it ½ % or 1% or 3%, or more? You are encouraged and challenged to increase it by a percentage each year until you have made that leap of faith and are tithing.

Remember that the Lord is never outdone in generosity. Pray that more and more of us are willing to be challenged by the Biblical directive to give back to the Lord a tithe of all that we have and are. If you choose to make a sacrificial gift, please complete both the upper and lower portions of the enclosed envelope.

*Your commitment is made before God and is confidential.  
It is not legally binding and may be changed if necessary by contacting the Parish Office.*

# Sacrificial Giving Guide

Amount of Weekly Gift								
Annual Income	Percentage of Income							
	10%	8%	7%	6%	5%	4%	3%	2%
\$10,000	\$19	\$15	\$13	\$12	\$10	\$8	\$6	\$4
\$20,000	\$38	\$31	\$27	\$23	\$19	\$15	\$12	\$8
\$30,000	\$58	\$46	\$40	\$35	\$29	\$23	\$17	\$12
\$40,000	\$77	\$62	\$54	\$46	\$38	\$31	\$23	\$15
\$50,000	\$96	\$77	\$67	\$58	\$48	\$38	\$29	\$19
\$60,000	\$115	\$92	\$81	\$69	\$58	\$46	\$35	\$23
\$70,000	\$135	\$108	\$94	\$81	\$67	\$54	\$40	\$27
\$80,000	\$154	\$123	\$108	\$92	\$77	\$62	\$46	\$31
\$90,000	\$173	\$138	\$121	\$104	\$87	\$69	\$52	\$35
\$100,000	\$192	\$154	\$135	\$115	\$96	\$77	\$58	\$38

*“Each must do as already determined, without sadness or compulsion, for God loves a cheerful giver.”  
- 2 Corinthians 9*



# MEMORIALS

## A Way to Remember



Memorials are a special way of honoring those whom we love, whether they are living or deceased. These memorials are often made for a special intention or in thanksgiving for a variety of blessings received from God.

Our Parish Campus will be a living memorial. Those who help in building it will leave something to the community itself that will be used by generations to come. The good they do is not interred with them, but will remain to share in the divine activity of God here on earth.

All contributions will be recognized in a Memorial to be displayed in our Parish facilities.

Sanctuary .....	\$7 Million
Blessed Sacrament Daily Chapel .....	\$1 Million
<b>Bell Tower .....</b>	<b>\$150,000*</b>
Cast Bronze Bells for Bell Tower .....	\$75,000
Priest's Sacristy .....	\$100,000
Minister's Sacristy .....	\$100,000
<b>Altar/Stations of the Cross .....</b>	<b>\$100,000*</b>
<b>Tabernacle.....</b>	<b>\$50,000*</b>
<b>Sanctuary Lamp .....</b>	<b>\$7,500*</b>
<b>Baptismal Font .....</b>	<b>\$50,000*</b>
Ambry .....	\$25,000
Pipe Organ .....	\$500,000
<b>Concert Grand Piano .....</b>	<b>\$30,000*</b>
<b>Stained Glass Windows (4 total)</b>	
(Scenes depicting the Life of St. Thomas More) \$100,000/window****	
Administration Building .....	\$1 Million
Youth Center.....	\$500,000
Choir—Meeting Room.....	\$250,000
Reflection Garden .....	\$500,000
<b>Courtyard Fountains/Grotto.....</b>	<b>\$55,000*</b>
Donor Memorial in Reflection Garden .....	\$150,000
<b>Permanent Fire Pit in Courtyard</b>	
(For the blessing of the New Fire at the Easter Vigil) \$25,000*	
Church Doors (Bronze).....	\$100,000
<b>Ambo .....</b>	<b>\$15,000*</b>
<b>Marian Image.....</b>	<b>\$50,000*</b>
Reconciliation Room .....	\$50,000
<b>ProceSSIONAL Cross .....</b>	<b>\$10,000*</b>
<b>Votive Candle Alcove .....</b>	<b>\$25,000*</b>
<b>President's Chair .....</b>	<b>\$5,000*</b>
<b>Deacon's Bench .....</b>	<b>\$5,000*</b>
Concelebrant Chairs (5 remaining) (*1 pledged)	\$3,000/chair
Vestment Case (Closet in Vestry) .....	\$20,000
<b>Paschal Candlestand (Cast Bronze) .....</b>	<b>\$15,000*</b>
<b>Sanctuary Candlesticks (6) &amp; Processional Candles (2)</b>	
..... \$16,000*	
<b>Handbells (four-octave set).....</b>	<b>\$15,000*</b>
Cantor Stand .....	\$5,000
Ossuary (Cremains Holder for Funeral Mass).....	\$10,000
<b>Altar Linens.....</b>	<b>\$5,000*</b>
Pedestals for Flowers (8) .....	\$8,000
Wedding Kneelers (5 total - 4 pledged @ \$1,000 ea.)	\$5,000
Unity Candle Wedding Stand .....	\$3,500
<b>Advent Wreath .....</b>	<b>\$5,000*</b>
<b>Credence Table .....</b>	<b>\$5,000*</b>
<b>Sets of Cups for Holy Communion (2) .....</b>	<b>\$5,000*</b>
Thurible/Boat/Stand .....	\$5,000
Secondary Education Initiative	
Pax Christi High School in North County .....	\$1 Million

**\*Already Reserved**

(The dollar amount of your memorial may or may not reflect the actual cost of the item. We are in the early stages of ascertaining these various costs. Your donation will guarantee your memorial.)

# ***“Our Journey Into The Future... Together”***

Our Permanent Church — Another Step Closer



# STEWARDSHIP: Capital Campaign

***“Our Journey Into The Future... Together”*** continues on pace, with 94% of our registered households responding and 78% making pledge commitments.

In the first three and a half years, we’ve made significant progress:

1. We began our Capital Campaign, ***“Our Journey Into The Future... Together”*** with Bill Ipsen as our Chairperson. This Campaign is being directed “in-house” by Chris Smith, our Director of Stewardship and Development, with the technical help of other Parish Staff. To date we have \$5.76M in pledges\*\*, and \$2.76M on hand at the Diocese in the Parish Savings, Deposit & Loan Trust (PSDL Trust).
2. We purchased the five-acre parcel of land contiguous to our Parish Campus for \$589,000 and now own it “free and clear.”
3. We continue to pay down our Parish debt \$11,000 each month. Our original debt was \$795,000. Our debt to the PSDL Trust is now at \$421,000. Our last payment will be in December 2011.
4. We have started to address our pledge to the Secondary Education Initiative for a new High School in North County. Our Parish pledge is \$1 million. We have now paid \$192,000 toward that pledge.
5. The New Construction Committee, chaired by Brian Leahey, has met several times preparing for the intense work it will do in the next few years as the construction documents are drawn up and, then, as the Church is built. The first major task was to select an architect. Renzo Zecchetto Architects of Santa Monica, California was chosen to carry out the creation of our construction documents.

6. Our Interior Design Team is led by Co-chairpersons, Phil and Pat Goscienski. Through an interview process, Robert Habiger of Dekker/Perich/Sabatini in Albuquerque, New Mexico was chosen as the Liturgical Consultant.

We now are anticipating that the Church with its Daily Mass Chapel (only the “shell” of the Daily Mass Chapel at this time) will cost \$9.3 million. In order to secure a loan from the PSDL Trust, certain requirements must be met:



“The Parish must have on deposit in the PSDL Trust one-third of the approved cost of the project for which the loan is sought.”

“Indebtedness will not jeopardize pastoral and financial responsibilities, such as:



- salaries and benefits
- utilities and maintenance
- program expenses
- diocesan assessments
- participation in special collections.”

“Normally, there will not be approval for a loan repayment plan which provides for annual debt service (principal and interest) from the Parish which would exceed 25% of the ordinary income of the Parish for the prior year as reflected on its financial statement.”

“The amortization period of the debt service will be dictated by the size of the loan and the ordinary income of the Parish...a loan for \$500,000 or more must be repaid within a reasonable period of time. In no case will a loan amortization period exceed 25 years.”

-continued...



\*\*\$5M pledges and \$760,000 investment gifts and donation of home to Parish, now used as a rectory.





In light of our present economy, all of this is very challenging indeed! I cannot emphasize strongly enough that we are operating under a "fund line" not a "time line." We move forward as we can in light of the funds we have on hand. There is no artificial "time line," just a realistic "time line." The people of St. Thomas More have always risen to the occasion, and I know that you will continue to do so. We are making steady progress.

We have certainly come a long way, and we still have a long way to go. It is just as important now, as it was in the beginning of the campaign, to continue on course. We are in charge of our future!

With the selection of Renzo Zecchetto Architects and Robert Habiger of Dekker/Perich/Sabatini, we confidently have taken another step in turning our dreams into reality. Since their selections, in the last few months, we continue to move forward step by step!

My heartfelt gratitude is extended to all the members of the New Construction Committee and the Interior Design Team. Much has already been done, and more awaits us.

Regarding the financial support of this endeavor, it must be said that the entire Parish has been extremely supportive of the Capital Campaign. It is because of this support that we are where we are.

The Finance Council continues to oversee the Operations Budget which must be "healthy" in order for us to move forward and add a new building to our Parish Campus. We cannot build more if we cannot properly maintain what we presently have. The offertory income must remain steady and must, realistically, increase.



The Capital Campaign income must continue to be strong. We need to have 1/3 of the total amount of our project on deposit with the diocese in order to secure our Diocesan loan. We are close, but not yet at that projected amount.

We also need to be mindful that we're still paying down our debt for the building which we now occupy. This payment is \$11,000 per month. Our last payment will be in December 2011.

You are encouraged to continue your patterns of giving, and, if you are able to do so, to increase your giving, to help "cover" those households who may need to give less because of our present economic conditions.

We always need to keep focused that the Church, ultimately, is a gathering of people in faith, not a building. We are the living stones of which the Church is built. We already have a consecrated Temple that is built with the members of this Parish, the living stones.

Much progress has been made, and still more will continue, as we work to make our dreams a reality. Buildings can help us in continuing the mission and ministry of Jesus for this time and place. However, they are a means to an end, and not an end in themselves.



Let us be mindful that St. Thomas More is built of the living stones that are this faith community's members.

We already have a Church! The buildings will come!

God's Blessings,

Rev. Michael Ratajczak





- 1 - Sanctuary
- 2 - Blessed Sacrament / Daily Chapel
- 3 - Reflection Garden / Memorial Area
- 4 - Bell Tower
- 5 - Parish Administrative Building / Youth Center
- 6 - Parish Center
- 7 - Preschool
- 8 - Parish School



## As You Make Your Gift Please Remember

- Please make checks payable to the St. Thomas More Building Fund.
- Pledge payments may also be made by Visa, Mastercard and automatic checking or savings withdrawal.
- Indicate the payment plan that best allows you to pay your pledge balance. The Parish will send you monthly reminders according to your payment preference.
- Payments should be made over a period of either 36 or 60 months.
- Pledge payments are in addition to your regular offering contributions. The Sunday offertory collection pays for the day-to-day operations of the Parish, while your pledge in this campaign will be used specifically for building our Parish facilities.
- Pledges are not legally binding, but rather an indication of your intention.

**Not all families can give at the same level. We ask that each family make an equal sacrifice, not necessarily an equal gift. Look into your heart to find the sacrificial gift that best fits your blessings from God.**

## Gift Plan Suggestions

<b>3 Year Gift Plan</b>						
<b>Gift Amount</b>	<b>Annually</b>	<b>Semi Annually</b>	<b>Quarterly</b>	<b>Monthly</b>	<b>Weekly</b>	<b>Daily Sacrifice</b>
\$125,000	\$41,666.67	\$20,833.33	\$10,416.67	\$3,472.22	\$801.28	\$114.16
\$100,000	\$33,333.33	\$16,666.67	\$8,333.33	\$2,777.78	\$641.03	\$91.32
\$75,000	\$25,000.00	\$12,500.00	\$6,250.00	\$2,083.33	\$480.77	\$68.49
\$50,000	\$16,666.67	\$8,333.33	\$4,166.67	\$1,388.89	\$320.51	\$45.66
\$37,500	\$12,500.00	\$6,250.00	\$3,125.00	\$1,041.67	\$240.38	\$34.25
\$25,000	\$8,333.33	\$4,166.67	\$2,083.33	\$694.44	\$160.26	\$22.83
\$15,000	\$5,000.00	\$2,500.00	\$1,250.00	\$416.67	\$96.15	\$13.70
\$10,000	\$3,333.33	\$1,666.67	\$833.33	\$277.78	\$64.10	\$9.13
\$7,500	\$2,500.00	\$1,250.00	\$625.00	\$208.33	\$48.08	\$6.85
\$5,000	\$1,666.67	\$833.33	\$416.67	\$138.89	\$32.05	\$4.57



<b>5 Year Gift Plan</b>						
<b>Gift Amount</b>	<b>Annually</b>	<b>Semi Annually</b>	<b>Quarterly</b>	<b>Monthly</b>	<b>Weekly</b>	<b>Daily Sacrifice</b>
\$125,000	\$25,000.00	\$12,500.00	\$6,250.00	\$2,083.33	\$480.77	\$68.49
\$100,000	\$20,000.00	\$10,000.00	\$5,000.00	\$1,666.67	\$384.62	\$54.79
\$75,000	\$15,000.00	\$7,500.00	\$3,750.00	\$1,250.00	\$288.46	\$41.10
\$50,000	\$10,000.00	\$3,750.00	\$2,500.00	\$833.33	\$192.31	\$27.40
\$37,500	\$7,500.00	\$2,500.00	\$1,875.00	\$625.00	\$144.23	\$20.55
\$25,000	\$5,000.00	\$1,875.00	\$1,250.00	\$416.67	\$96.15	\$13.70
\$15,000	\$3,000.00	\$1,250.00	\$750.00	\$250.00	\$57.69	\$8.22
\$10,000	\$2,000.00	\$1,000.00	\$500.00	\$166.67	\$38.46	\$5.48
\$7,500	\$1,500.00	\$750.00	\$375.00	\$125.00	\$28.85	\$4.11
\$5,000	\$1,000.00	\$500.00	\$250.00	\$83.33	\$19.23	\$2.74

Response forms are available after all weekend Masses and in the Parish Office during the week. For further information, please contact Chris Smith at (760) 758-4100, ext 120 or [chriss@stmoside.org](mailto:chriss@stmoside.org)

# Christian Stewardship and Planned Giving: A Way to Give and a Way to Receive

Our Planned Giving program is one way of helping the Parish raise the resources necessary to continue our campus build out. Planned Giving is a generic term that covers the many ways an individual can give to a charity while, in most cases, avoiding taxes.

## Charitable Lead Trust

A Charitable Lead Trust is a way to reduce or eliminate taxes that would otherwise be due on assets left to your heirs. Under the terms of a lead trust, assets are transferred to a trust that pays income to the Parish for a predetermined number of years. At the end of that period, the assets are returned to whomever you specified at the start.

## Designated Bank Accounts

Accounts can be established at financial institutions which allow the owner complete control over the principal and interest during his/her lifetime, but will pass to a designated beneficiary (such as a charity) upon death without probate administration. Certificates of deposit, regular savings accounts and money market accounts are a few examples of this type of account.

## Gifts of Property

Various types of property can be gifted to the Church through wills and/or living trusts. These gifts include homes, land, and various other items. At St. Thomas More we now have a Vehicle Donation program in place and are fortunate to have ongoing donations throughout the year.

## Life Insurance

This is a contract between the policy owner and the insurer, where the insurer agrees to pay a sum of money upon the occurrence of the insured individual's or individuals' death or other event, such as terminal illness or critical illness. In return, the policy owner agrees to pay a stipulated amount called a premium at regular intervals or in lump sums.

## Tax Savings

Federal tax laws make it possible to reduce or eliminate gift, estate, capital gain, and income taxes on funds you donate to charity.

## Gifts of Cash

Through gifts of cash, it is possible to eliminate tax on a significant amount of applicable income.

## IRAs

If you intend to give to a charity as part of your estate plan, leaving an IRA to the charity may be the best way to fulfill that intent. Your charity of choice, being income tax-exempt, will pay no income tax on the IRA distributions it receives. Family members, in contrast, would have to pay income tax on any distributions they receive from an IRA they inherit from you, though they would get an income tax deduction for estate taxes, if applicable.

## Gifts of Other Assets

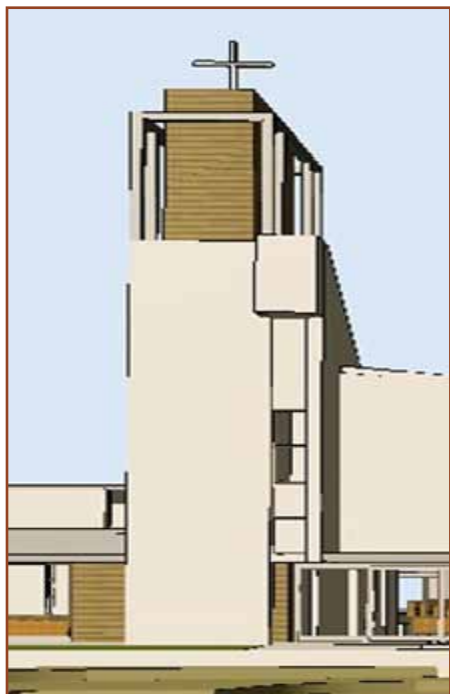
Gifts such as stocks, bonds, and mutual funds that have increased in value since you owned them, can result in tax savings.



*Thanks to the generous Parishioner donation of handbells, we are all able to enjoy the unique and beautiful sounds of our handbell choir!*



# TOWERS OF FAITH



Many individuals are making arrangements for their future life and legacy. Wills, living trusts, tax/estate planning, funerals and more are all a part of life's big picture.

The Church of St. Thomas More Towers of Faith program is composed of individuals and Parishioners who provide future support for our Parish by remembering the Parish in their will or living trust. The members of this group share a common bond of generosity and visionary leadership which nourishes the ongoing success of St. Thomas More.

Please consider remembering St. Thomas More as part of your legacy in your will or living trust. Several of our Parishioners, past and present, have already included the Parish in their estate planning. Their foresight and generosity has proved to be very beneficial and is much appreciated!

To participate in the Towers of Faith, or for more information, contact the Stewardship and Development Office at the Parish.

Chris Smith, Director of Stewardship and Development  
760-758-4100, ext. 120 or [chriss@stmoside.org](mailto:chriss@stmoside.org)

## Wills

Giving through your Will can be a convenient way to leave a lasting legacy for the Parish. After you provide for your loved ones, you may decide to give a specific amount, a percentage of your estate, or all or part of what remains after others have been remembered.

EXAMPLE: Mrs. Rita Whiting has been a Parishioner of St. Thomas More for 14 years now. In her initial Will, she included St. Thomas More as a beneficiary only if her son did not survive her. Her son is now financially independent. Mrs. Johnson now decides to amend her Will to include both St. Thomas More and her son.



## Living Trusts

A Living Trust is a means of creating a legal entity that becomes the owner of your property, but allows you to maintain 100% control over the same property. It is something to consider beyond a Will because Wills are subject to probate taxes and trusts are not.

There are various kinds of trusts that provide different benefits. Basically, by establishing a trust you can avoid taxes, provide an income for yourself and your spouse, as well as give a portion of your assets to charity!

EXAMPLE: Mr. Steward Wellness donates a certain amount of money to a Charitable Trust. He decides to receive a specified monthly income. He then names himself and his wife as beneficiaries. The Trust is set up to terminate upon the death of both parties, at which time the Trust will pay the remaining assets in this Trust to a charity of his choosing.

There are multiple ways to participate in the Towers of Faith:

- Designated Beneficiary Accounts
- Life Insurance
- Stocks and/or Bonds
- Gifts of Property
- Endowments
- Last Will and Testament
- Living Trusts

*We extend our deepest gratitude to all of our Parishioners at St. Thomas More!  
Your willingness to generously share your time, talent, and treasure  
is instrumental in our efforts to make a difference in our  
Parish and community. God's blessings and peace!*

## **Pastoral Staff**

*Rev. Michael Ratajczak, Pastor*

*Deacon Thomas A. Goeltz*

*Rev. Thomas W. Thompson*

*Sr. Maureen Brown*

*Kathleen Bell*

*Gale and Jeff Gibbons*

*Ron and Louise Briseno*

*Stacey Griffin*

*Douglas Lynn*

*Kathy Santy*

*Chris Smith*

*Henny Jocelyn*

*Natalie Provinse*

*Lorraine Doering*

*Joe Garcia*

## **Capital Campaign Leadership**

*Rev. Michael Ratajczak, Pastor*

*Bill Ipsen, Chairperson*

*Chris Smith, Director of Stewardship & Development*

*Ron Briseno*

*Doug D'Agrosa*

*Don Eppich*

*Paul Ibbetson*

*Brian Leahey*

*Janice Treat*



...are built up as a spiritual house, to be a  
holy priesthood, to offer up spiritual  
sacrifices, acceptable to God through  
Jesus Christ.  
- 1 Peter 2:5



CHURCH OF ST. THOMAS MORE  
1450 South Melrose Drive, Oceanside, CA 92056  
Phone (760) 758-4100 Fax (760) 758-4165  
Website: [www.stmoside.org](http://www.stmoside.org) Email: [Parishoffice@stmoside.org](mailto:Parishoffice@stmoside.org)